



MARINE SOFTWARE LIMITED

**MARINE
SAFETY
MANAGER**
FOR WINDOWS

'Simplicity is the key to Success'

**A complete Safety Management solution for the Maritime Industry,
specially designed to assist with associated aspects of ship operations.**



INTRODUCTION

The Marine Safety Manager package has been designed by specialists to provide ships' crews and safety managers with a simple, easy to use tool for managing safety on board all types of vessels.

SAFETY MANAGER FEATURES

- Instant access to Company policies, procedures, forms and responsibilities
- Generic assessments, such as Risk/COSHH can be seamlessly created within the office system and exported to the entire fleet of vessels, or solely by vessel class
- Issue and control of permits to work, with automatic warning of conflicting permits issued
- Accident/Incident recording, investigation and reporting with the optional facility for reporting in the MAIB/HSE Riddor format
- Period statistical presentation of accidents and incidents
- Includes a full Non-Conformity reporting system
- Environmental feature enables users to manage ISO 14001 and to record aspects/impacts and to set and monitor objectives/targets
- Fully auditable and provides accountability
- Can be fully integrated with the *Marine Planned Maintenance* and *Marine Document Manager* systems

Units 3 & 4 Aylesham Business Park, Ackholt Road, Aylesham, Kent CT3 3AJ. UK
Main Tel: +44 (0)1304 840009 Support: +44 (0)1304 840506 Fax: +44 (0)1304 840075 Email: info@marinesoftware.co.uk

www.marinesoftware.co.uk



MARINE SOFTWARE LIMITED

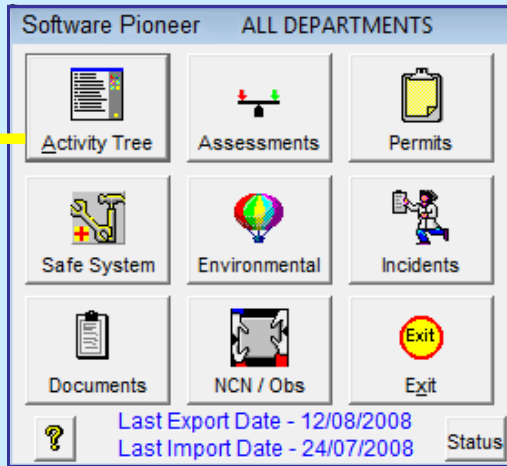
**MARINE
SAFETY
MANAGER**
FOR WINDOWS



**OFFICE
SAFETY
MANAGER**
FOR WINDOWS



'Simplicity is the key to Success'

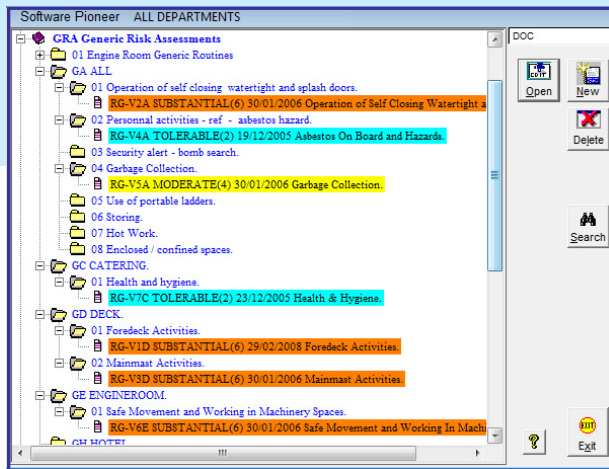


The following Safety Modules are available within the System:

Risk / COSHH / Machinery & Manual Handling assessments, Permits to Work, Incident / Accident Reporting, Safe Systems of Work, Health Monitoring, Documents / Procedures, Environmental Aspects with monitoring and Non-Conformity / Observation reporting

The **'Status'** screen is displayed as soon as any user logs into the system, targeting specific areas to be accessed **directly** via a hyperlink

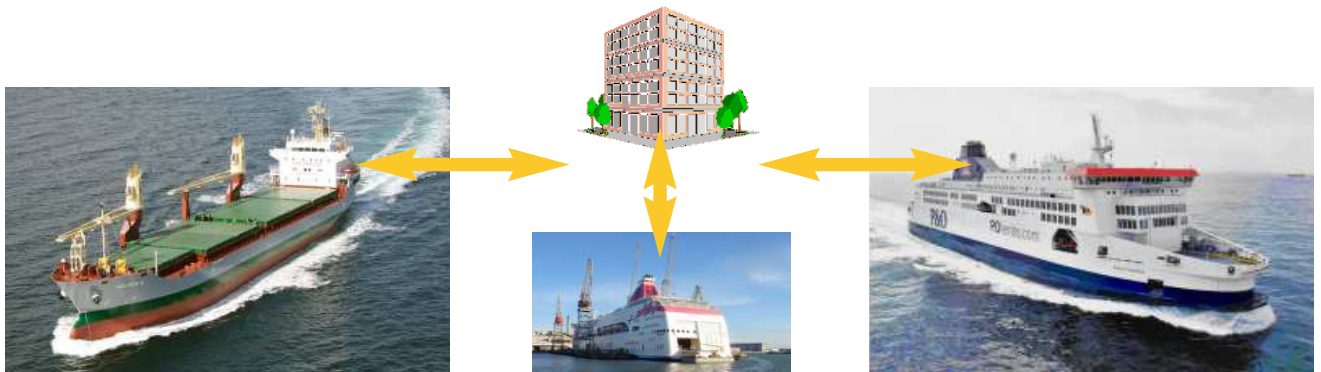
All Safety documents are filed on an easy to navigate **'Activity Tree'** which is fully searchable. Assessments are also colour coded according to their assigned **'Risk Factor'**



Risk Assessments	41	Active/Issued Permits	3
Due Assessments	27	Open Incidents / Accidents	17
Due Further Actions	16	Total Incidents / Accidents	18
Machinery Assessments	3	Documents	617
Due Assessments	3	Documents for Review	9
Due Further Actions	0	Changed Documents	27
Safe Systems of Work	5	Health Monitoring	1
COSHH Assessments	2	Manual Handling	3
Due Assessments	2	Due Assessments	0
Due Further Actions	0	Due Further Actions	0
Environment Aspects	50	Due Objective Readings	1
Due Aspects	43	Due Objective Cards	45
Non-Conformities	14	Observations	0
Overdue NCN	5	Overdue-Observations	0

Numbers of Assessments/Documents/Permits contained within the system
Close this window before proceeding to the 8 button menu.

'simple data exchange'



Units 3 & 4 Aylesham Business Park, Ackholt Road, Aylesham, Kent CT3 3AJ. UK
Main Tel: +44 (0)1304 840009 Support: +44 (0)1304 840506 Fax: +44 (0)1304 840075 Email: info@marinesoftware.co.uk

www.marinesoftware.co.uk