

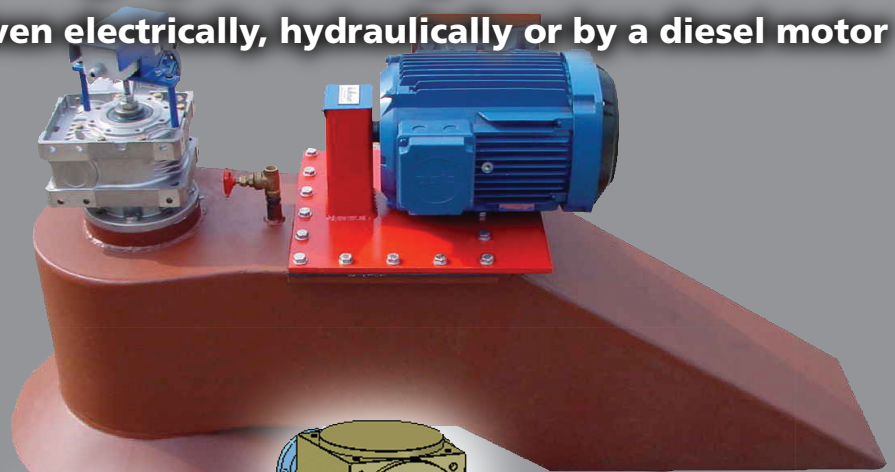
kalkman

BOW AND STERN THRUSTERS

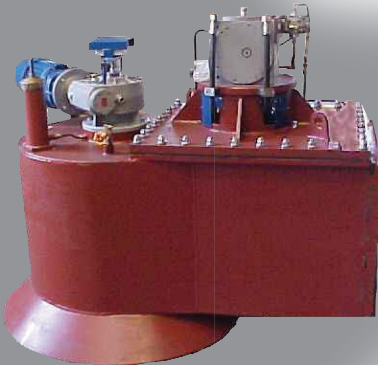
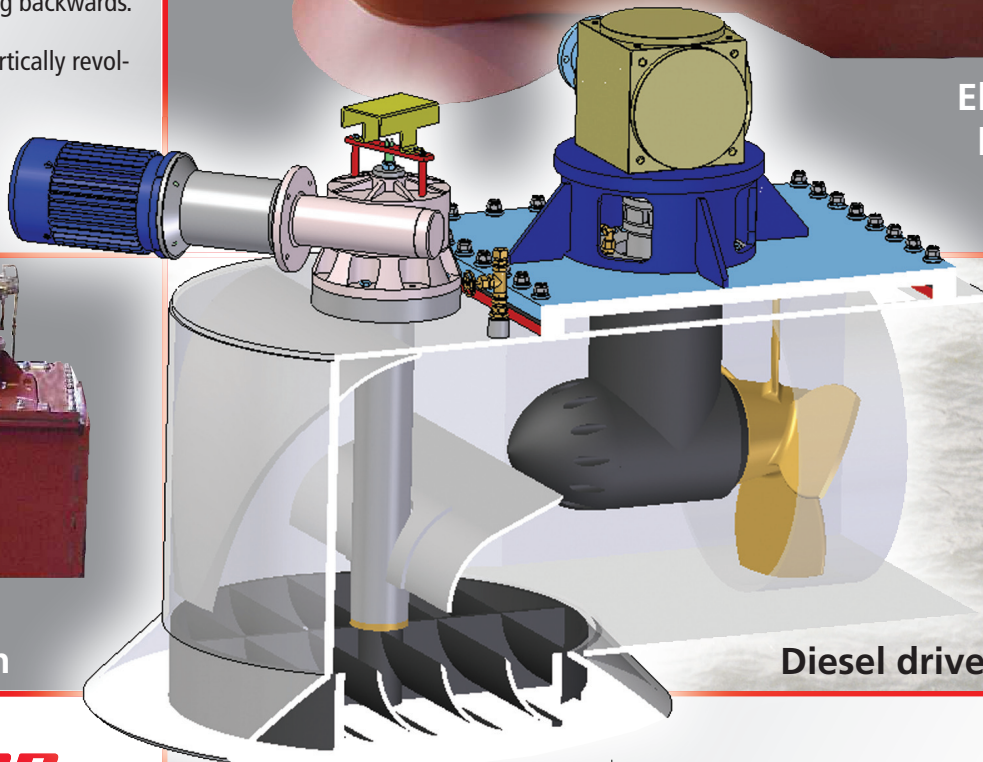
- A bowthruuster with many possibilities in one unit, namely:
- Thrust power in any direction desired, for wards - backwards - starboard - port and all the other directions of 360°.
- Good emergency propulsion, speed approx. 7Km per hour.
- Suitable for shallow water, there are various options for water suction.
- Bowthruuster also functions while ship is at full speed.
- Has a bow-rudder and bow-rudder rotor function.
- Works as a rudder when sailing backwards.
- Great thrust power through vertically revolving propeller.
- The ship does not stray when sailing slowly.
- Capacities of 10 – 1000 HP

Type Epsilon

driven electrically, hydraulically or by a diesel motor



Electrically or hydraulically driven



Diesel driven

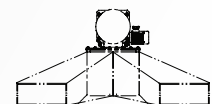
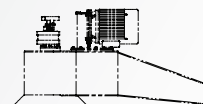
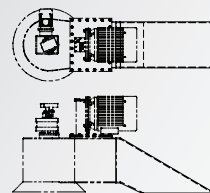
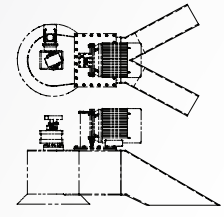
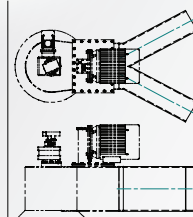
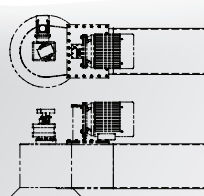
Diesel driven

kalkman
SCHEEPSTECHNIEK B.V.

Ballastjets
Bow and stern thrusters
Diesel motors
Auxiliary machines

P.O. box 23
2920 AA Krimpen a/d IJssel
The Netherlands
Telephone +31 180 514644
Telefax +31 180 518450

www.kalkman-bowthrusters.com
E-mail boegschroeven@kalkman.nl



Build-in options